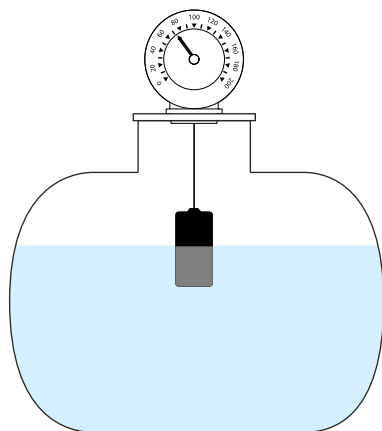


Mechanical level gauge M 200



- Local level indication
- For any tank shape
- Mechanical, without power supply
- Scale in cm
- Vertical or horizontal dial

APPLICATION

- Diesel tanks, water tanks, suitable for non-aggressive liquid in safe area.

DESCRIPTION

The mechanical gauge consists of a float which follows as the level of liquid is varying in the tank. The float is linked to a rotating pointer which displays on the dial the quantity remaining of liquid in the tank.

Gauge calibration: The scale graduated in cm is adjusted on site to the height of the tank using a screwdriver (see page 2).

Entirely mechanical, the gauge provides a direct indication of the level in the tank, without electrical power.

TECHNICAL FEATURES

Dial position	Versions: Horizontal or Vertical
Fittings	BSP-M 1 1/2"
	Option : Coupling BSP-M 2" ----> 1 1/2"
Graduated scale	0 to 200 cm
Adjustment	To container height with a screw driver
Dial	Ø 95 mm
Float	Ø 42 mm
Operating pressure	Atmospheric
Operating temperature	0... +40 °C

Adjustment of float system up to the height of the manhole (Max. 270 mm).

CODE NUMBERS AND REFERENCES

Code	Reference	Description
580 200	M 200 V	Mechanical level gauge; Vertical dial
580 202	M 200 H	Mechanical level gauge; Horizontal dial
Accessories:		
580 204	R40/50	Coupling for M200 gauge; BSP-M 2" --> 1 1/2"

BAMO INTERNATIONAL

22, Rue de la Voie des Bans · Z.I. de la gare · 95100 ARGENTEUIL

Tel +33 (0)1 30 25 83 20 Web www.bamo.eu

Fax +33 (0)1 34 10 16 05 E-mail export@bamo.fr

Mechanical level gauge M 200

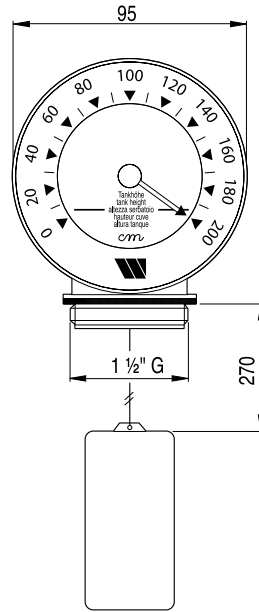
22-05-2023

D-580.03-EN-AB

LEV

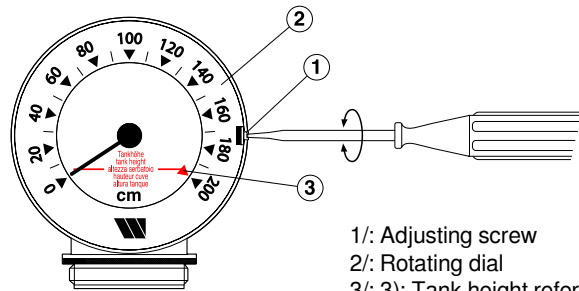
580-03/1

DIMENSIONS [mm]



COMMISSIONING - ADJUSTMENT

To adjust the mechanical gauge, simply turn the graduated scale in cm to the number corresponding to the height of the tank.



- 1/: Adjusting screw
- 2/: Rotating dial
- 3/: Tank height reference point

A simple method may be adopted when the tank is empty:

Introduce the float into the tank and gradually lower it until it rests vertically on the bottom; Then turn the knob until the zero point coincides with the indicator pointer.

Note: Install the gauge at a certain distance from the filling connection (or in the protective tube) to prevent the float from being shaken too much by the flow of liquid when filling the tank

BAMO INTERNATIONAL

22, Rue de la Voie des Bans · Z.I. de la gare · 95100 ARGENTEUIL

Tel +33 (0)1 30 25 83 20 Web www.bamo.eu

Fax +33 (0)1 34 10 16 05 E-mail export@bamo.fr

Mechanical level gauge
M 200

22-05-2023

D-580.03-EN-AB

LEV

580-03/2