

# Temperature probe with Pt 100 $\Omega$ sensor TS 11

- Sensor Pt 100  $\Omega$  at 0 °C
- Range from -50 to +250 °C
- Stem and fitting in AISI 316 L
- Head in aluminum alloy or in plastic



## REFERENCE TABLE

### Model

#### Fitting

- 0 None
- 1 BSP 1/2"
- 2 NPT 1/2"

#### Stem material

- I AISI 316 L

#### Stem length

xxx 50 ... 999 mm

#### Stem O.D.

- 06 6 mm (length max. 500 mm)
- 08 8 mm (length max. 800 mm)
- 10 10 mm (length max. 999 mm)

#### Sensor

- 3 Simplex 3 wires
- 4 Simplex 4 wires
- 6 Duplex 2 x 3 wires

#### Accuracy

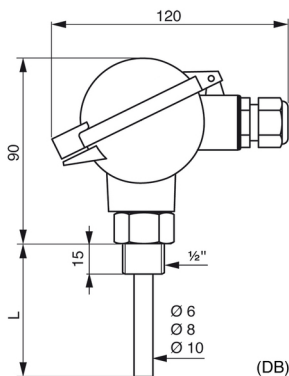
- A Class A
- B Class B

#### Connection

- C Ceramic terminal box
- T 4-20 mA Transmitter

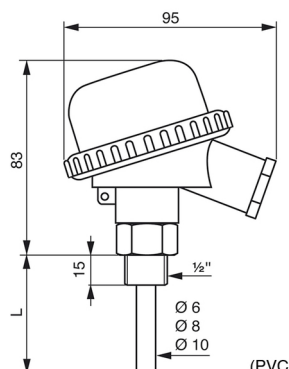
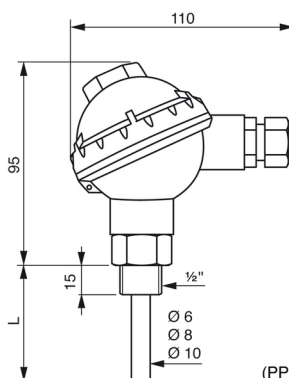
#### Head

- DB IP65 - painted aluminum
- PVC IP54 - in PVC
- PP IP54 - in PP



TS 11 1 I 250 08 4 A T DB

(Example)



# BAMO INTERNATIONAL

22, Rue de la Voie des Bans · Z.I. de la gare · 95100 ARGENTEUIL

Tel +33 (0)1 30 25 83 20 Web [www.bamo.eu](http://www.bamo.eu)

Fax +33 (0)1 34 10 16 05 E-mail [export@bamo.fr](mailto:export@bamo.fr)

Temperature probe with Pt  
100  $\Omega$  sensor  
**TS 11**

13-01-2022

D-611.01-EN-AC

TE

611-01 /1