

# Flow controllers, metallic CDA



- Operates in all positions
- With 1 adjustable contact
- Versions: Stainless steel or brass
- Pressure: Up to 350 bar
- Ranges: between 0.005 ...150 l/min

## APPLICATIONS

- Cooling circuit monitoring, high pressure washing piping, dry-run pump prevention, etc....

## DESCRIPTION

The CDA controls the flow, on a vertical or horizontal pipe, of a liquid free of particles.

### Operation

An orifice plate with a magnet is pushed by the fluid to monitor, in a cylindrical tube. A compensating spring insures the equilibrium of plate and allows the mounting in any position. A Reed contact is adjustable all along the scale, its status changes with the passage of the magnet. With these equipments, the CDA operates independently of the pressure, even in low flow rates.

CDA flow controllers must be installed away from any magnetic field. All ferromagnetic parts, must be at a minimum distance of 10 cm.

## TECHNICAL FEATURES

Temperature	-20 ... +100 °C (On request: up to 160 °C)
Operating ranges	l/min of water at 20 °C
Accuracy	±10 % Full range
Pressure drop	Fitting 1": 0.02 ... 0.4 bar Fitting 1/2": 0.02 ... 0.3 bar Fitting 1/4": 0.02 ... 0.2 bar
Contact	Standard: N.O. without flow
Hysteresis	≈1.5 mm
Connector	IP 65; DIN 43650; C shape

### Brass model

Pressure limits	250 bar (Fittings 1") 300 bar (Fittings 1/2" and 1/4")
Main parts	Body: Nickel-plated brass; other wet parts: brass
Spring	AISI 316 Ti (1.4571)
Seals	NBR
Magnet	Hard ferrite

### Stainless steel model

Pressure limits	300 bar (Fittings 1") 350 bar (Fittings 1/2" and 1/4")
Main parts	Body, other wet parts: AISI 316 Ti (1.4571)
Spring	AISI 316 Ti (1.4571)
Seals	FPM
Magnet	Hard ferrite

*Other configurations: On request*

**EC Conformity: The instrument meets the legal requirements of the current European Directives**

**BAMO INTERNATIONAL**

22, Rue de la Voie des Bans · Z.I. de la gare · 95100 ARGENTEUIL

Tel +33 (0)1 30 25 83 20 Web [www.bamo.eu](http://www.bamo.eu)

Fax +33 (0)1 34 10 16 05 E-mail [export@bamo.fr](mailto:export@bamo.fr)

**Flow controllers, metallic  
CDA**

02-03-2022

D-722.01-EN-AC

**DEB**

**722-01 /1**

## CONTACTS FEATURES

The adjustment is continuous, sliding the switch along its guide and fixing it with the screws.

### Standard SPST, N.O. without flow:

CDA, fittings 1" and 1/2" Rated: 230 V / 3 A / 100 VA  
 CDA, fittings 1/4" Rated: 140 V AC / 0.7 A / 20 VA  
 Rated: 200 V DC / 1 A / 20 VA

### Change-over contact, SPDT (option):

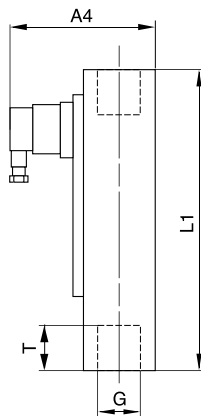
CDA, fittings 1" and 1/2" Rated: 250 V / 1.5 A / 50 VA (minimal load 3 VA)  
 CDA, fittings 1/4" Rated: 150 V AC/DC / 1 A / 20 VA

### ATEX agreements, Ex contacts (Option):

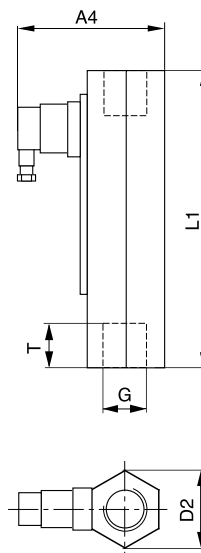
CDA, fittings 1" ATEX II 2 G Ex mb II T6 & ATEX II 2 D Ex tD A21 IP67 T80 °C  
 ATEX II 2 G Ex mb II T5 & ATEX II 2 D Ex tD A21 IP67 T100 °C  
 SPST, N.O. contact without flow: Rated 250 V / 2 A / 60 VA  
 SPDT, change-over contact: Rated 250 V / 1 A / 30 VA  
 CDA, fittings 1/2" and 1/4": Ex II 2G Ex ib IIC & Ex II 2D Ex ib IIC  
 Operating temperature: -5 °C ... +45 °C

## CODE NUMBERS AND DIMENSIONS

Code		Reference	Flow range [ l/min ]	Fitting BSPF G	Dimensions [mm]				Mass [ g ]
Brass	AISI 316 Ti				T	L1	D2	A4	
722 100	722 200	CDA 01	0.005 ... 0.006	1/4"	10	65	17	57	140
722 102	722 202	CDA 02	0.04 ... 0.13						
722 106	722 206	CDA 06	0.1 ... 0.6						
722 108	722 208	CDA 3	0.5 ... 3						
722 127	722 227	CDA 7	2...7	1/2"	14	90	31.2	67	350
722 128	722 228	CDA 13	3...13						
722 129	722 229	CDA 20	4...20						
722 133	722 233	CDA 45	15...45	1"	17	152	40	99	1130
722 136	722 236	CDA 90	30...90						
722 139	722 239	CDA 150	60...150						



Models: CDA 01, 02, 06, 3, 45, 90, 150



Models: CDA 7, 13, 20

**BAMO** INTERNATIONAL

22, Rue de la Voie des Bans · Z.I. de la gare · 95100 ARGENTEUIL  
 Tel +33 (0)1 30 25 83 20 Web www.bamo.eu  
 Fax +33 (0)1 34 10 16 05 E-mail export@bamo.fr

Flow controllers, metallic  
**CDA**

02-03-2022

D-722.01-EN-AC

DEB

722-01 /2