

Multi-jet counter for cold water BETA-MJ-SDC



- 5 digits
- Ranges from 31 l/h up to 31 m³/h
- Dry dial
- Magnetic transmission
- For horizontal or vertical piping

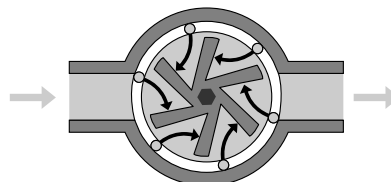
APPLICATION

- Totalization of water flow on horizontal and vertical pipes
- Suitable for polluted water, even with suspended solids
- Options: Pulse emitter, Totalizer BCP 48

DESCRIPTION

Multi-jet turbine counters with dry dial allow the flow to be totalized.

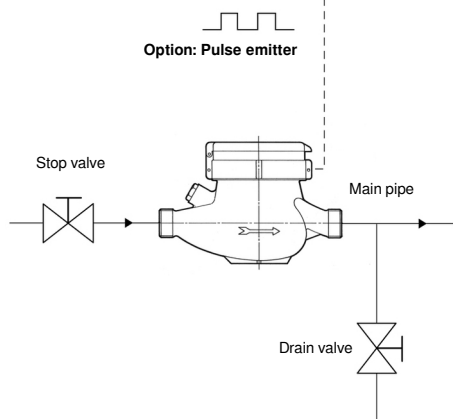
Operating principle of "Multiple jets": The flow is distributed and strikes the turbine blades simultaneously.



OPTION: Totalizer



Option: Pulse emitter



As an option, the counter can be fitted with a pulse emitter: K = 1, 10, 100 or 1000 litres per pulse (excepted for DN40: K = 10, 100 or 1000).

Caution: The pulse emitter is factory fitted on its counter and only in factory (to order together with the counter).

Precautions :

To install at a low point of a horizontal or vertical pipe, easy to access and protected from frost. The 360° orientation of the totalizer must be carried out in the factory before sealing. The direction of flow must correspond to that of the arrow on the body.

In order to drain the piping, it is recommended to install a stop valve before the counter and a drain valve after the counter.

After installation, fill the pipe and drain it, to eliminate air bubbles (they can cause measurement errors and damage the counter). For the same reason, it is important never to let the counter empty. The operating conditions must be in accordance with the features of the counter (pressure, temperature, flow rate).

Never weld the piping when the counter is installed, as the high temperature will damage the internal plastic parts.

Accessory:

The BCP 48 totalizer is used to count pulses, especially in dosing applications. (See data-sheet 289-03)

BAMO INTERNATIONAL

22, Rue de la Voie des Bans · Z.I. de la gare · 95100 ARGENTEUIL

Tel +33 (0)1 30 25 83 20 Web www.bamo.eu

Fax +33 (0)1 34 10 16 05 E-mail export@bamo.fr

Multi-jet counter for cold
water
BETA-MJ-SDC

08-06-2022

D-787.06-EN-AE

DEB

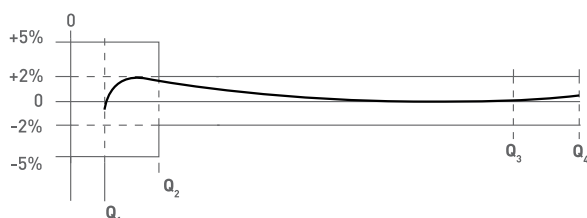
787-06 /1

CODE NUMBERS AND FEATURES

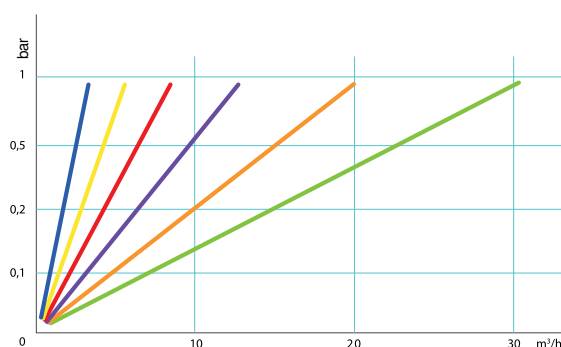
Cold water counters with BSP-M fittings (Uni ISO 228/1)

Code	787 221	787 223	787 224	787 225	787 226	787 227	787 228
ND	15	20	25	32	40	50	50
Fittings	½"	¾"	1"	1 ¼"	1 ½"	2"	FLANGES ND50
Threads on body	¾"	1"	1 ¼"	1 ½"	2"	2 ½"	
Performance according to MID 2014/32/EU -- Metrological class MID (Q ₃ /Q ₁) R = 80							
Minimum Q ₁ [l/h]	31.3	50	78.8	125	200	312.5	312.5
Maximum Q ₄ [m³/h]	3.125	5	7.875	12.5	20	31.25	31.25
Continuous flow Q ₃ [m³/h]	2.5	4	6.3	10	16	25	25
Transition rate Q ₂ [l/h]	50	80	126	200	320	500	500
PN [bar]	16	16	16	16	16	16	16
Reading Min. [l]	0.05	0.05	0.05	0.05	0.5	0.5	0.5
Reading Max. [m³]	99 999	99 999	99 999	99 999	999 999	999 999	999 999
Temperature Class	T30 / T50						

Nominal accuracy



Pressure drop

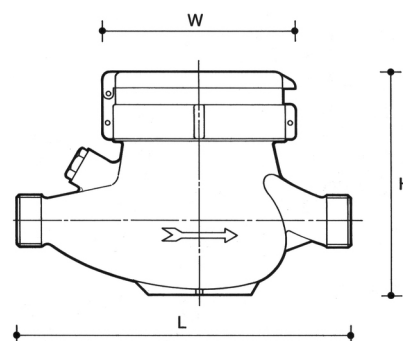


EC Conformity: The instrument meets the legal requirements of the current European Directives.

DIMENSIONS

ND	15	20	25	32	40	50
L [mm]	165	190	260	260	300	300
H [mm]	80	109	115	120	148	180/190*
W [mm]	99	99	104	104	125	125
Mass [kg]	1.53	1.65	2.83	3.10	4.20	9.6

(*): Flanged fitting



BAMO INTERNATIONAL

22, Rue de la Voie des Bans · Z.I. de la gare · 95100 ARGENTEUIL

Tel +33 (0)1 30 25 83 20 Web www.bamo.eu

Fax +33 (0)1 34 10 16 05 E-mail export@bamo.fr

Multi-jet counter for cold water

BETA-MJ-SDC

08-06-2022

D-787.06-EN-AE

DEB

787-06/2