

PILOT OPERATED SOLENOID VALVES

EV 160



- PVC or PP, female fittings from ND 15 up to ND 50
PTFE, BSPF from 1/2" up to 2"
- Pilot operated, with the liquid pressure
- Pressure from 0.3 to 6 bar
- 2-way valves
- Diaphragm EPDM or FPM

APPLICATIONS

- For aggressive liquids

DESCRIPTION

The solenoid valve consists of a diaphragm, that opens or closes the flow, and a piston that controls the secondary circuit assistance to closure. The upstream pressure is used as against pressure to actuate the diaphragm at the closure of the main flow line. The piston raised with the supply of the coil, releases the counterpressure, thus opening the flow line. These valves must always be installed on a pressurized pipe, with a ΔP of at least 0.3 bar .

TECHNICAL FEATURES

Power supply	230 V AC, 50 Hz 24 V DC
Voltage tolerance	$\pm 10\%$ according to VDE 0580
Consumption	230 V AC, 50 Hz: 6.5 VA 24 V DC: 5 W
Duty cycle	100 %
Response time	Opening: 30 ... 150 ms Closing: 50 ... 1000 ms
Function	Normally closed (N.C.)
Bore size	15 to 50 mm
Pressure limits	0.3 ... 6 bar
Mounting position	Coil in upright position
MATERIALS	
Diaphragm and pilot diaphragm	EPDM or FPM
Body	PVC: Socket ends for solvent welding PPH: Socket ends for fusion welding PTFE: BSPF
Ambient temperature	Max. 50 °C
Fluid temperature	Max. 50 °C
Viscosity	Up to about 38 cSt
Protection	IP 65 (connector fitted) <i>or version EEXm II T4: on request</i>
Connector	Plug in socket DIN 43650, cable gland PG 9
EC Conformity:	The instrument meets the legal requirements of the current European Directives.

Kv FACTOR

ND	15	20	25	32	40	50
kv [l/min]	51	163	171	386	400	493

BAMO INTERNATIONAL

22, Rue de la Voie des Bans · Z.I. de la gare · 95100 ARGENTEUIL
Tel +33 (0)1 30 25 83 20 Web www.bamo.eu
Fax +33 (0)1 34 10 16 05 E-mail export@bamo.fr

PILOT OPERATED SOLENOID VALVES
EV 160

26-11-2019

D-920.01-EN-AC

PLAS

920-01 /1

CODE NUMBERS AND REFERENCES

230 V AC, 50 Hz; PVC body, EPDM diaphragms Socket ends for solvent welding		24 V DC; PVC body, EPDM diaphragms Socket ends for solvent welding	
Code	Reference	Code	Reference
920 101	EV 160 - 230 V AC PVC/EPDM DN15	920 201	EV 160 - 24 V DC PVC/EPDM DN15
920 102	EV 160 - 230 V AC PVC/EPDM DN20	920 202	EV 160 - 24 V DC PVC/EPDM DN20
920 103	EV 160 - 230 V AC PVC/EPDM DN25	920 203	EV 160 - 24 V DC PVC/EPDM DN25
920 104	EV 160 - 230 V AC PVC/EPDM DN32	920 204	EV 160 - 24 V DC PVC/EPDM DN32
920 105	EV 160 - 230 V AC PVC/EPDM DN40	920 205	EV 160 - 24 V DC PVC/EPDM DN40
920 106	EV 160 - 230 V AC PVC/EPDM DN50	920 206	EV 160 - 24 V DC PVC/EPDM DN50
230 V AC, 50 Hz; PVC body, FPM diaphragms Socket ends for solvent welding		24 V DC; PVC body, FPM diaphragms Socket ends for solvent welding	
Code	Reference	Code	Reference
920 111	EV 160 - 230 V AC PVC/FPM DN15	920 211	EV 160 - 24 V DC PVC/FPM DN15
920 112	EV 160 - 230 V AC PVC/FPM DN20	920 212	EV 160 - 24 V DC PVC/FPM DN20
920 113	EV 160 - 230 V AC PVC/FPM DN25	920 213	EV 160 - 24 V DC PVC/FPM DN25
920 114	EV 160 - 230 V AC PVC/FPM DN32	920 214	EV 160 - 24 V DC PVC/FPM DN32
920 115	EV 160 - 230 V AC PVC/FPM DN40	920 215	EV 160 - 24 V DC PVC/FPM DN40
920 116	EV 160 - 230 V AC PVC/FPM DN50	920 216	EV 160 - 24 V DC PVC/FPM DN50
230 V AC, 50 Hz; PP body, EPDM diaphragms Socket ends for fusion welding		24 V DC; PP body, EPDM diaphragms Socket ends for fusion welding	
Code	Reference	Code	Reference
920 121	EV 160 - 230 V AC PP/EPDM DN15	920 221	EV 160 - 24 V DC PP/EPDM DN15
920 122	EV 160 - 230 V AC PP/EPDM DN20	920 222	EV 160 - 24 V DC PP/EPDM DN20
920 123	EV 160 - 230 V AC PP/EPDM DN25	920 223	EV 160 - 24 V DC PP/EPDM DN25
920 124	EV 160 - 230 V AC PP/EPDM DN32	920 224	EV 160 - 24 V DC PP/EPDM DN32
920 125	EV 160 - 230 V AC PP/EPDM DN40	920 225	EV 160 - 24 V DC PP/EPDM DN40
920 126	EV 160 - 230 V AC PP/EPDM DN50	920 226	EV 160 - 24 V DC PP/EPDM DN50
230 V AC, 50 Hz; PP body, FPM diaphragms Socket ends for fusion welding		24 V DC; PP body, FPM diaphragms Socket ends for fusion welding	
Code	Reference	Code	Reference
920 131	EV 160 - 230 V AC PP/FPM DN15	920 231	EV 160 - 24 V DC PP/FPM DN15
920 132	EV 160 - 230 V AC PP/FPM DN20	920 232	EV 160 - 24 V DC PP/FPM DN20
920 133	EV 160 - 230 V AC PP/FPM DN25	920 233	EV 160 - 24 V DC PP/FPM DN25
920 134	EV 160 - 230 V AC PP/FPM DN32	920 234	EV 160 - 24 V DC PP/FPM DN32
920 135	EV 160 - 230 V AC PP/FPM DN40	920 235	EV 160 - 24 V DC PP/FPM DN40
920 136	EV 160 - 230 V AC PP/FPM DN50	920 236	EV 160 - 24 V DC PP/FPM DN50
230 V AC, 50 Hz; PTFE body, FPM diaphragms BSPF fittings		24 V DC; PTFE body, FPM diaphragms BSPF fittings	
Code	Reference	Code	Reference
920 151	EV 160 - 230 V AC PTFE/FPM 1/2"	920 251	EV 160 - 24 V DC PTFE/FPM 1/2"
920 152	EV 160 - 230 V AC PTFE/FPM 3/4"	920 252	EV 160 - 24 V DC PTFE/FPM 3/4"
920 153	EV 160 - 230 V AC PTFE/FPM 1"	920 253	EV 160 - 24 V DC PTFE/FPM 1"
920 154	EV 160 - 230 V AC PTFE/FPM 1 1/4"	920 254	EV 160 - 24 V DC PTFE/FPM 1 1/4"
920 155	EV 160 - 230 V AC PTFE/FPM 1 1/2"	920 255	EV 160 - 24 V DC PTFE/FPM 1 1/2"
920 156	EV 160 - 230 V AC PTFE/FPM 2"	920 256	EV 160 - 24 V DC PTFE/FPM 2"

BAMO INTERNATIONAL

22, Rue de la Voie des Bans · Z.I. de la gare · 95100 ARGENTEUIL
 Tel +33 (0)1 30 25 83 20 Web www.bamo.eu
 Fax +33 (0)1 34 10 16 05 E-mail export@bamo.fr

**PILOT OPERATED SOLENOID
 VALVES
 EV 160**

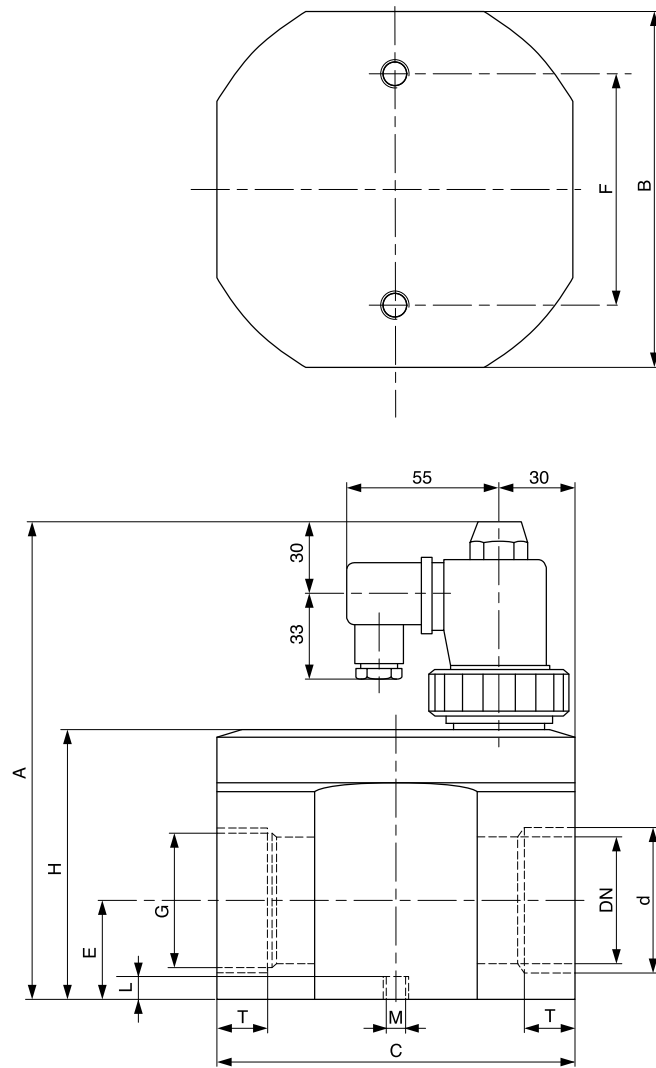
26-11-2019

D-920.01-EN-AC

PLAS

920-01/2

DIMENSIONS [mm]



ND	G [inch]	d [mm]	T [mm]	A [mm]	B [mm]	C [mm]	E [mm]	H [mm]	L [mm]	Ø M	W [mm]
15	1/2"	20	14.5	129	62	74	16	49	6	M5	40
20	3/4"	25	16	143	94	98	23	63	10	M6	60
25	1"	32	16	143	94	98	23	63	10	M6	60
32	1 1/4"	40	20	171	124	124	31	91	12	M8	80
40	1 1/2"	50	20	171	124	124	31	91	12	M8	80
50	2"	63	20.8	189	140	140	39	109	12	M8	90

920

920

BAMO INTERNATIONAL

22, Rue de la Voie des Bans · Z.I. de la gare · 95100 ARGENTEUIL

Tel +33 (0)1 30 25 83 20 Web www.bamo.eu

Fax +33 (0)1 34 10 16 05 E-mail export@bamo.fr

**PILOT OPERATED SOLENOID
VALVES
EV 160**

26-11-2019

D-920.01-EN-AC

PLAS

920-01 /3