

Plastic ph/ORP immersion probe (1 electrode) 9336



USER MANUAL

BAMO INTERNATIONAL

22, Rue de la Voie des Bans · Z.I. de la gare · 95100 ARGENTEUIL

Tel +33 (0)1 30 25 83 20 Web www.bamo.eu

Fax +33 (0)1 34 10 16 05 E-mail export@bamo.fr

Plastic ph/ORP immersion
probe (1 electrode)

9336

MES

130-01 /1

22-07-2021

M-130.01-EN-AB

SUMMARY

SAFETY INSTRUCTIONS	3
DESCRIPTION	3
TECHNICAL FEATURES	3
CE Conformity	3
INSTALLATION	3
CABLE CONNECTION	4
CABLE CONNECTION (Continued)	5
CALIBRATION	6
DETAILS OF PROBE 9336 WITH ELECTRODE AND CABLE	7

BAMO INTERNATIONAL

22, Rue de la Voie des Bans · Z.I. de la gare · 95100 ARGENTEUIL

Tel +33 (0)1 30 25 83 20 Web www.bamo.eu

Fax +33 (0)1 34 10 16 05 E-mail export@bamo.fr

Plastic ph/ORP immersion
probe (1 electrode)

9336

MES

130-01/2

22-07-2021

M-130.01-EN-AB

SAFETY INSTRUCTIONS

- Assembly, commissioning and maintenance must be carried out by qualified technicians.
- Install the probe observing the technical features.
- Use adequate personal protection during disassembly or maintenance.
- This device may operate only under the conditions defined in this manual.

DESCRIPTION

The immersion probe 9336 holds one electrode, and protect it, such as our pH / ORP electrodes. For measurements in tank, drain, basin, open channel. The standard version includes an extension tube, a connection head and an electrode holder. The electrode holder is designed to protect the electrode from breakage during calibration routines. The electrode protection part is easy to unscrew. For calibration, our buffer flasks grip on the holder; the probe can lay down the floor.

TECHNICAL FEATURES

Immersion depth	1,000 mm (on request: from 0.3 up to 3 m)
Standard version	PVC PPH
Fitting on site	Option: Adjustable flange DN50 (code 130112) Or PE collar Ø 50 mm (other on request)
Cable outlet	PG 9 (Other on request)
Maximum pressure	Equivalent to immersion height
Maximum temperature	PVC: 55 °C PPH: 100 °C

Maxima of pressure and temperature are limited also by the specifications of each electrode. It is not recommended to work at the same time up to the maxima of pressure and temperature

Suitable electrodes

For immersion probe 9336, the suitable electrodes are documented on the data sheets 150-01 / -02 / -03. Only the electrodes with a fitting PG 13.5 are suitable.

CE Conformity

EC Conformity: The instrument meets the legal requirements of the current European Directives.

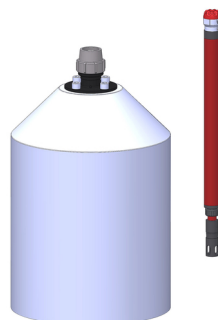
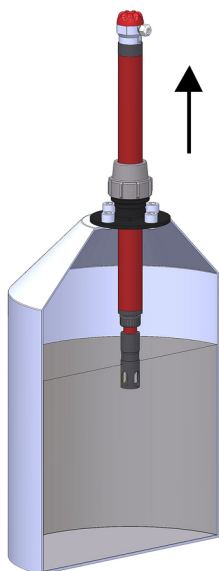
INSTALLATION

The mounting and connection of the electrode must be carried out before immersion of the probe.

Never immerse the probe without a well fitted electrode. The liquid must not get inside.

Warning:

If there is moisture inside, dry all parts thoroughly before reassembling.



BAMO INTERNATIONAL

22, Rue de la Voie des Bans · Z.I. de la gare · 95100 ARGENTEUIL

Tel +33 (0)1 30 25 83 20 Web www.bamo.eu

Fax +33 (0)1 34 10 16 05 E-mail export@bamo.fr

Plastic pH/ORP immersion
probe (1 electrode)
9336

22-07-2021

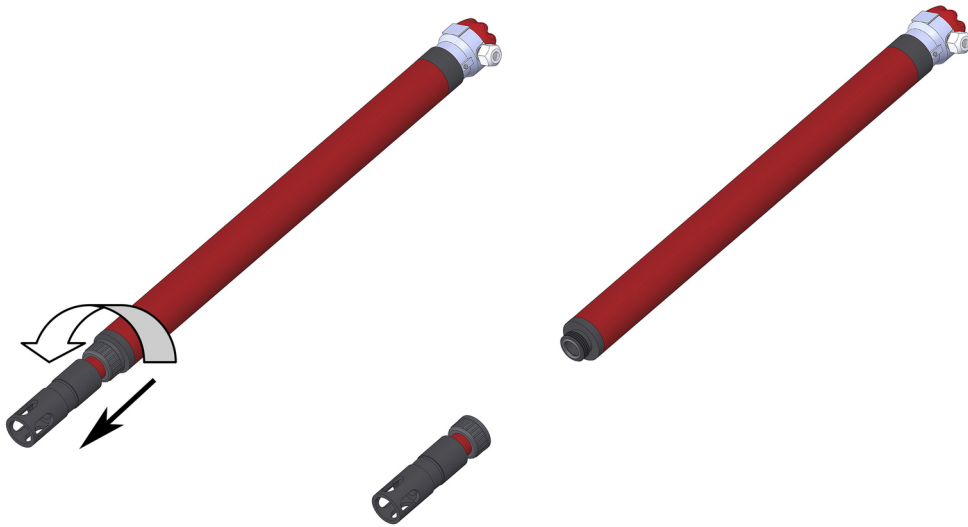
M-130.01-EN-AB

MES

130-01 /3

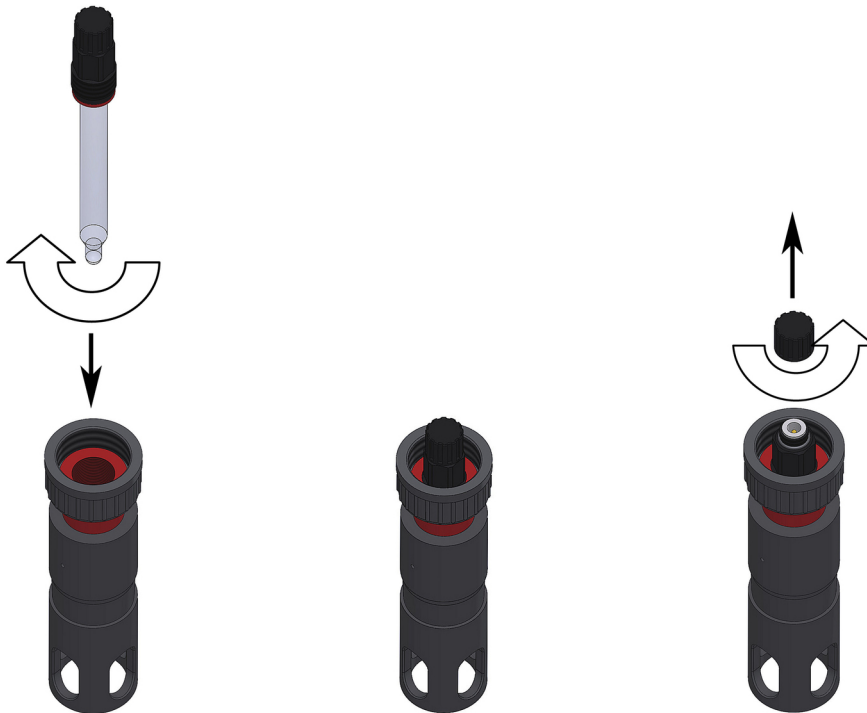
CABLE CONNECTION

Dismount the electrode holder



Unscrew the electrode holder from the nut.
Make sure that the O-Ring remains in place

Screw-in the electrode onto the holder



Screw the electrode into the holder. Then unscrew the protective black cap of the electrode head.

BAMO INTERNATIONAL

22, Rue de la Voie des Bans · Z.I. de la gare · 95100 ARGENTEUIL

Tel +33 (0)1 30 25 83 20 Web www.bamo.eu

Fax +33 (0)1 34 10 16 05 E-mail export@bamo.fr

Plastic ph/ORP immersion
probe (1 electrode)

9336

MES

130-01 /4

22-07-2021

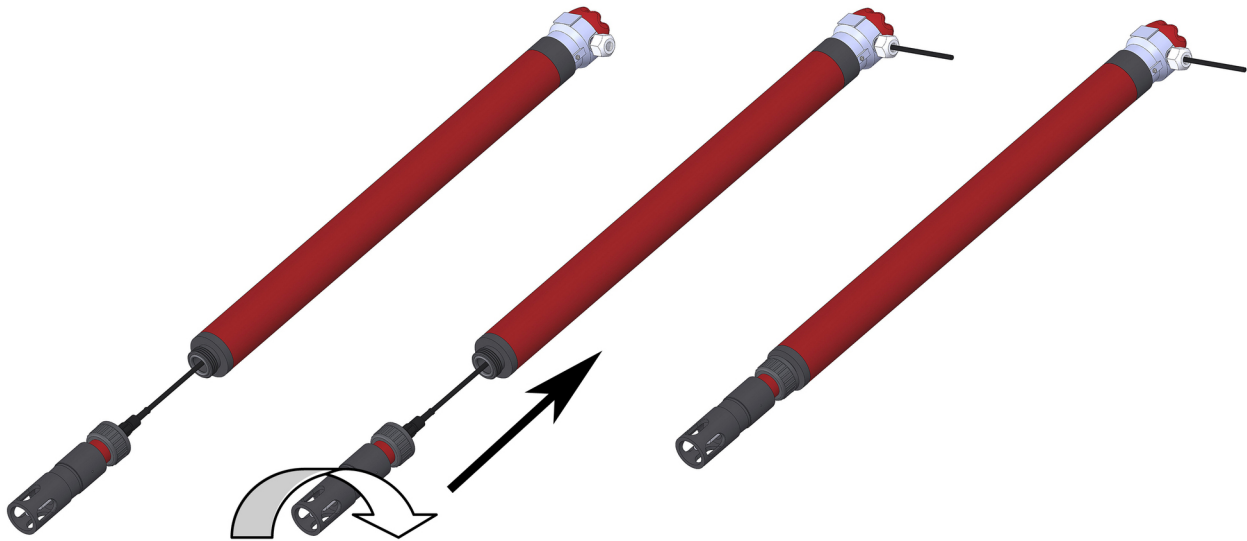
M-130.01-EN-AB

CABLE CONNECTION (Continued)

Screw the coaxial connector 9054 (already mounted on the cable, see the manual msa160- 01 if necessary) onto the electrode head.



Pass the cable through the head housing and screw the holder on the bottom of probe



Once the cable is in place, the electrode holder is tightly screwed and the cable gland tightened: the cable can be connected to the pH-meter.

The mounting of the ph 9054 coaxial connector must be carried out in accordance with the recommendations of the manual msa160-01.

BAMO INTERNATIONAL

22, Rue de la Voie des Bans · Z.I. de la gare · 95100 ARGENTEUIL

Tel +33 (0)1 30 25 83 20 Web www.bamo.eu

Fax +33 (0)1 34 10 16 05 E-mail export@bamo.fr

Plastic pH/ORP immersion
probe (1 electrode)

9336

MES

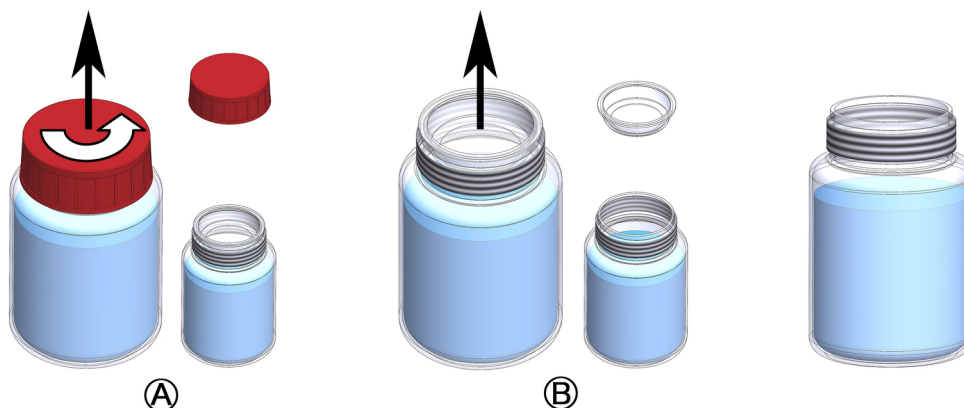
130-01 /5

22-07-2021

M-130.01-EN-AB

CALIBRATION

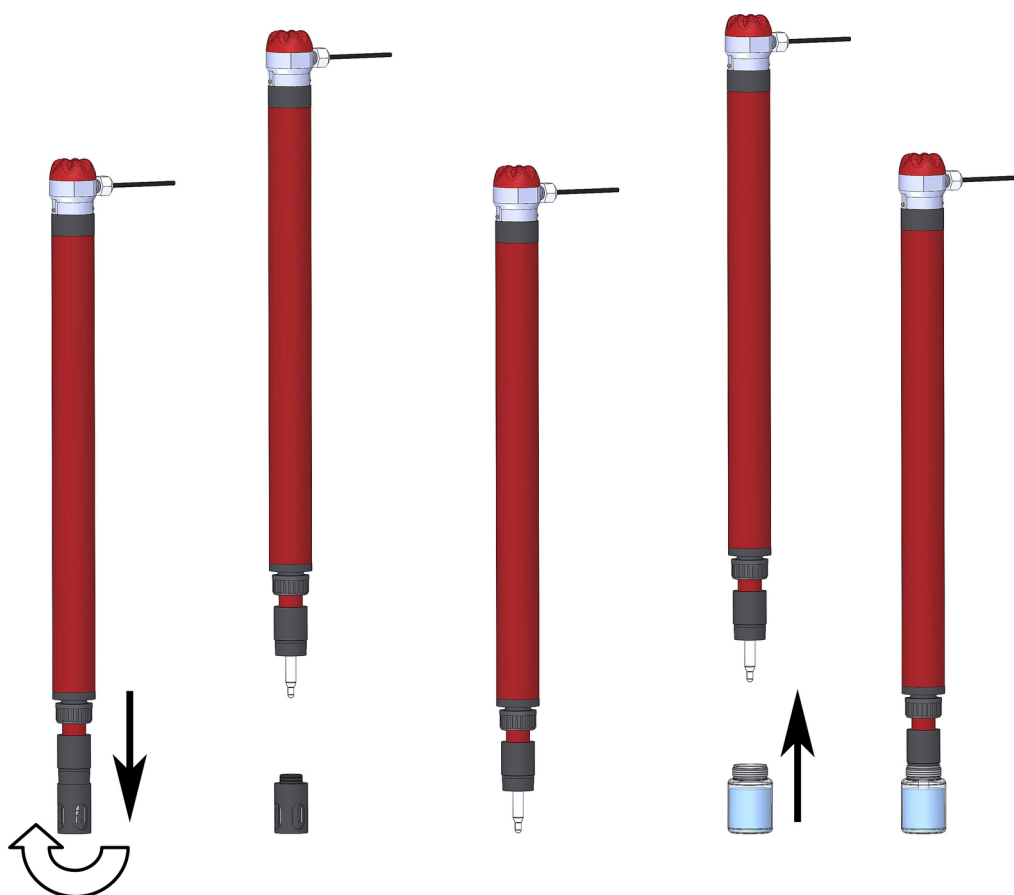
Open the buffer flasks.



A: Unscrew the cap

B: Remove the cap gasket

Take off the electrode protection end, then insert the calibration flask on the base of the holder and perform the calibration.



The neck of the flask with the standard solution is inserted directly on the holder. So, the electrode is immersed in the buffer solution and protected from shocks.

When the calibration is completed: After removing the last buffer flask, screw back the electrode protection end, tightening it moderately; Return the probe to the correct level of immersion.

BAMO INTERNATIONAL

22, Rue de la Voie des Bans · Z.I. de la gare · 95100 ARGENTEUIL

Tel +33 (0)1 30 25 83 20 Web www.bamo.eu

Fax +33 (0)1 34 10 16 05 E-mail export@bamo.fr

Plastic pH/ORP immersion
probe (1 electrode)

9336

MES

130-01 /6

22-07-2021

M-130.01-EN-AB

DETAILS OF PROBE 9336 WITH ELECTRODE AND CABLE



BAMO INTERNATIONAL

22, Rue de la Voie des Bans · Z.I. de la gare · 95100 ARGENTEUIL

Tel +33 (0)1 30 25 83 20 Web www.bamo.eu

Fax +33 (0)1 34 10 16 05 E-mail export@bamo.fr

**Plastic ph/ORP immersion
probe (1 electrode)**

9336

MES

130-01 /7

22-07-2021

M-130.01-EN-AB