

# ACCESSORIES

## for pneumatic actuator

- Solenoid valve monostable SV61
- Solenoid valve bistable SV62
- Limit switch box with free potential contact BE 41
- Proximity limit switch box



## INSTRUCTIONS MANUAL

**BAMO MESURES**

22, Rue de la Voie des Bans - Z.I. de la Gare - 95100 ARGENTEUIL  
Tél : (+33) 01 30 25 83 20 - Web : [www.bamo.fr](http://www.bamo.fr)  
Fax : (+33) 01 34 10 16 05 - E-mail : [info@bamo.fr](mailto:info@bamo.fr)

**ACCESSORIES**  
for pneumatic actuator

21-12-2011

913 M1 10 C

**PLAS**

**913-10/1**

# Solenoid valves SV61 and SV62

**Application:** Command the air distribution useful for move the valve under the pneumatic actuator.

**The solenoid valves are delivery with:**

- Adhesive label "3/2"
- Solenoid valve 5/2
- Small bag: 2 washers, 2 small screws
- 2x screws
- 3/2 plate
- 4x O ring

## 1. Pneumatic actuator connection

### 1.1. Caution

The solenoid valves can be used on all types of pneumatic actuators, rotary or linear with a NAMUR connection. Be careful to feed the solenoid valve with the correct electric voltage. Check that the actuator, single or double acting, need the 3/2 plate. Feed in compressed air by the hole 1.

### 1.2. Assembly

For the single acting actuator:

- Put the 3/2 plate between actuator and solenoid valve
- Stick the adhesive label on the pneumatic diagram on solenoid valve
- Screw the solenoid valve and the plate on the actuator
- Feed the solenoid valve with the voltage wrote on his housing

For the double acting actuator:

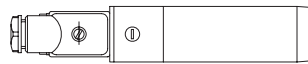
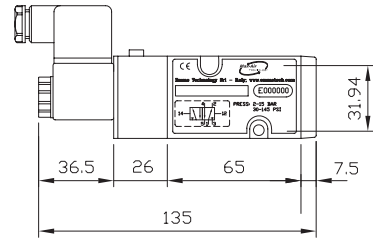
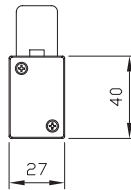
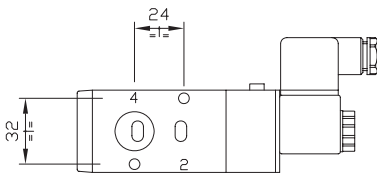
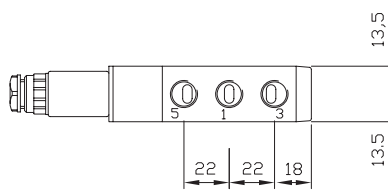
- Screw the solenoid valve on the actuator
- Feed the solenoid valve with the voltage wrote on his housing

## 2. Technical features

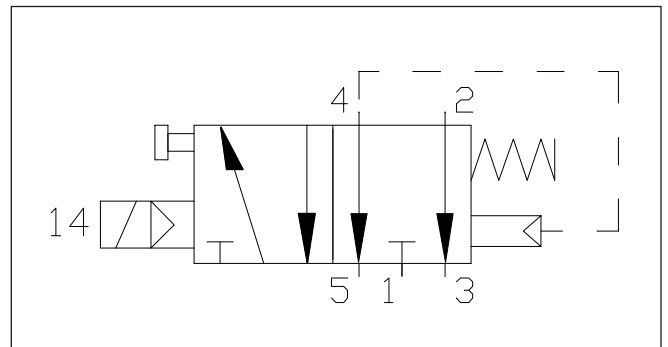
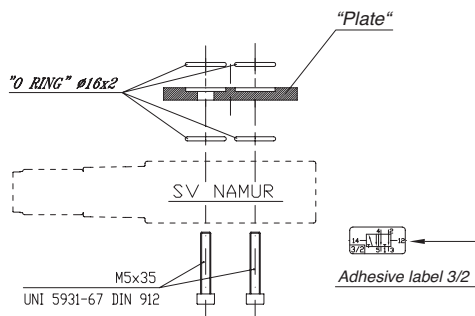
Monostable (SV61 type):	3/2 or 5/2 ways
Bistable (SV62 type):	3/2 or 5/2 ways
Voltage:	24 V AC/DC 220 V AC
Power:	3 W / 4,5 VA
Electric connection:	DIN 1/2"
Protection:	IP 65
Pneumatic connection:	1/4" G
Max use frequency:	600 per minute
Duty rate:	100%
Kv:	10.5
Air pressure:	2 bar min / 8 bar max
T°:	-20°C...+70°C
Weight:	0.360 kg (SV61) 0.450 kg (SV62)

Agreements: NAMUR VDI/DE 3845 and ISO 5211

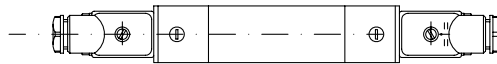
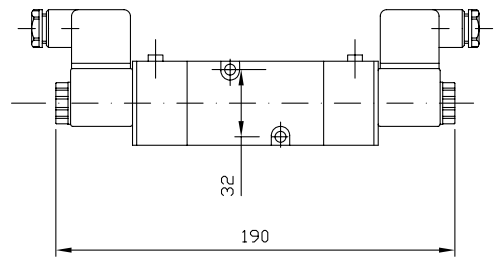
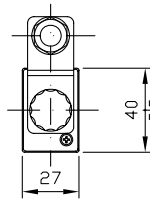
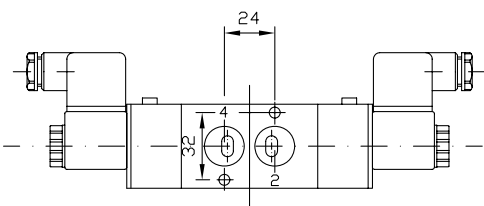
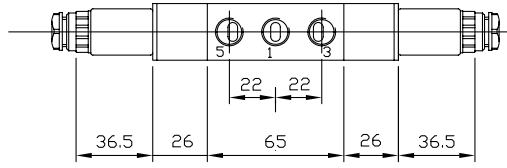
# SV61



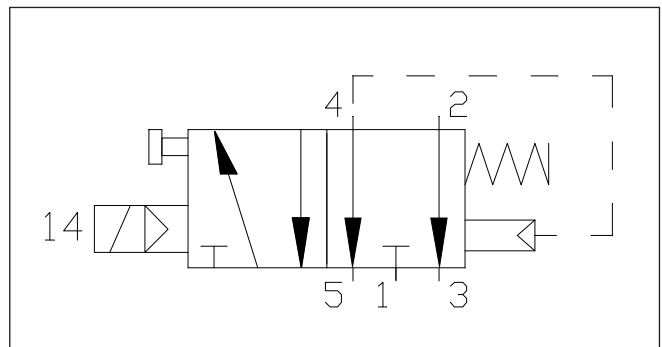
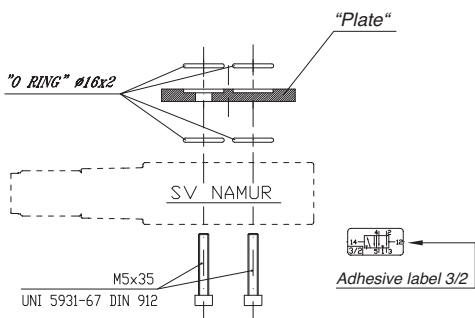
## STANDARD KIT



# SV62



## STANDARD KIT



# Limit switch box BE41

**Application:** This limit switch box with two free potential contacts are use to know the extreme positions of the valves.

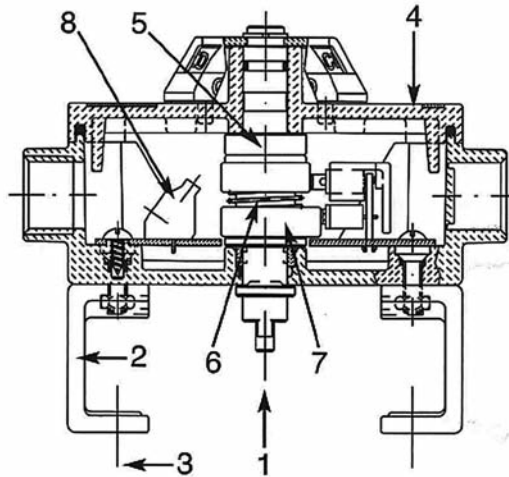
## 3. Pneumatic actuator connection

### 3.1. Caution

- Before removing the cover and proceeding with any operations, it is essential that the limit switch box is not energized.
- The conduit caps supplied with the limit switch box are for transit purpose only and do not guarantee the IP65 protection. Therefore, it's necessary to replace them with connectors suitable for the required protection rating.

### 3.2.. Connection on the actuator

- Align the shaft (réf.1) to the actuator pinion and engage with it.
- Using the provided screws (réf.3) and washers, tighten the brackets (réf.2) to the actuator.

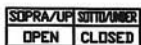


## 4. Switches setup

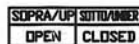
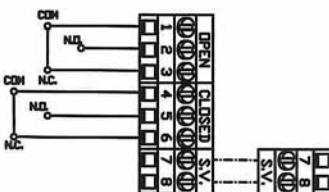
- Remove the four screws and remove the cover 4.
- Turn the actuator until to the open position..
- Push the upper cam down 5, cam open, turn until the switch is activated and then release; the spring between the 2 cams 6 will ensure the cam re-engagement onto the shaft. (**Note:** on the shaft there is a spline and each line adjust 2°).
- Turn the actuator until the closed position.
- Pull the lower cam up (7), cam closed, turn until the switch is activated and then release ; the spring between the 2 cams 6 will ensure the cam re-engagement onto the shaft..
- Reassemble the cover (4) and tighten the screws.

## 5. Electrical connection

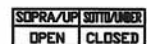
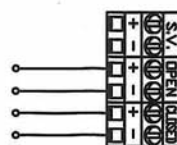
- Remove the cover 4.
- Remove the protection cap(s) and substitute it them with the plug(s) that ensures the desired protection, inserting a wrench onto the flats of each conduit and then tighten. Be careful that the thread of the connector does not protrude inside the box.



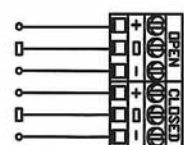
MECHANICAL SWITCHES WIRING DIAGRAM



LSB 2 WIRES PROXIMITY WIRING DIAGRAM

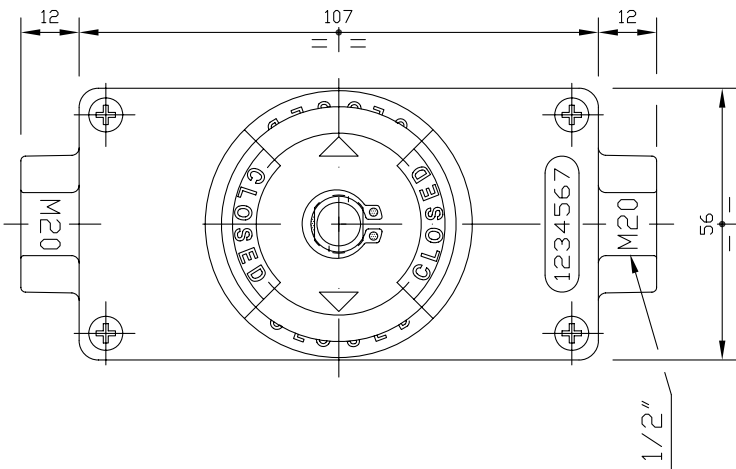
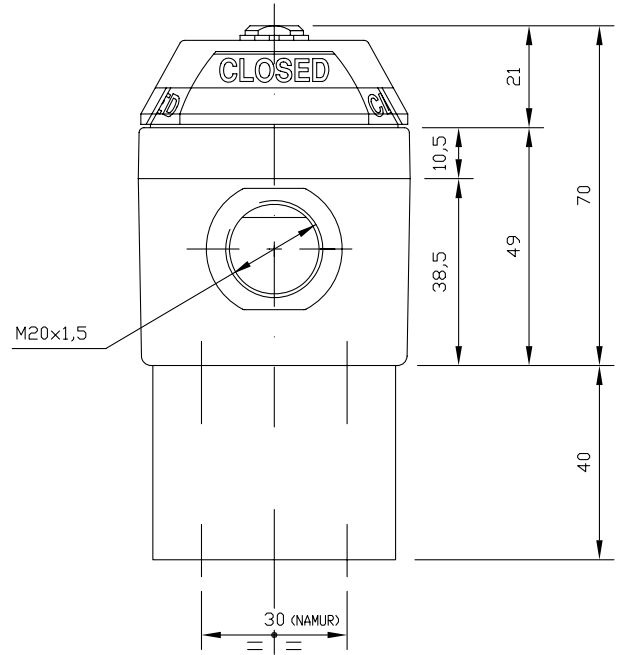
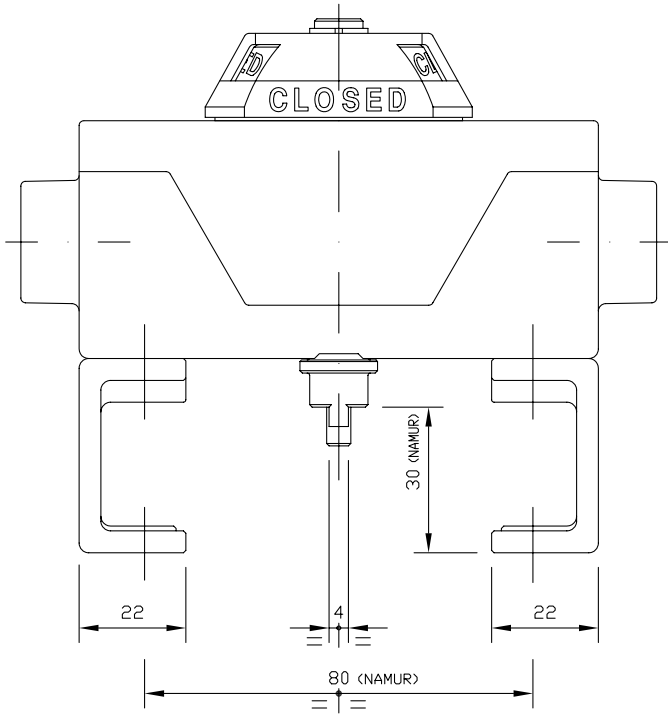


LSB 3 WIRES PROXIMITY WIRING DIAGRAM



## 6. Technical features (BE41)

Electric connexion:	DIN 1/2"
Protection:	IP 65
Box:	Technopolymer
Cams:	Technopolymer
Microswitch:	Polyamide
Position indicator:	Technopolymer
Terminal strip:	Polyamide
Seals:	NBR (Nitrile)
Screw:	Stainless steel (AISI 304)



# Proximity limit switch box

**Application:** In industrial condition the proximity switch are very useful.

Actually unlike the free potential contact the proximity limit switch are:

- Contactless so they don't have mechanical wear
- High commutation frequency
- Accuracy of commutation
- Protection against the vibrations, dust and humidity

The 200mA current can be used for opening or closing an electric relay.

**CAUTION:** This proximity limit switch box can't be used without a special axis.

## 7. Technical features

Electric connection: 3 wires cable, length 1 m  
Function: PNP  
Voltage: 10-30 V DC  
I<sub>a</sub>: 200 mA

## 8. Wiring

