

# Flow rate in open channels

## VENTURI CHANNELS DEBITFLO



- According to ISO 4359
- 10 models
- Up to 2500 m<sup>3</sup>/h
- Composite material
- Easy civil engineering

### OPTIONS:

- Level transmitter, flow calculator, data-logger and interfaces
- Channel built in mobile housing

### APPLICATIONS

Flow rate measurements in open channel, particularly with contaminated liquids, even corrosive or with solid particles.

### DESCRIPTION

The open channel DEBITFLO is designed for flow measurements up to 2500 m<sup>3</sup>/h. Made of reinforced polyester, DEBITFLO has an excellent dimensional stability, guaranteeing good measurement accuracy.

In association with a level transmitter, it is the right solution for continuous flow measurement, reliable and accurate.

For flows up to 100 m<sup>3</sup>/h, it is possible to provide the channel inside a polypropylene housing. Over 100 m<sup>3</sup>/h, the approach channel (1 or 2 parts) may be supplied or not if on site the approach channel is made on concrete structures accordingly to recommendations and standards.

#### Description:

The Venturi is a restriction (lateral contractions) which ensures a laminar flow at the point of measurement. The upstream level (h) is directly related to the flow (Q). The table Flow vs. level is supplied with each Venturi channel.

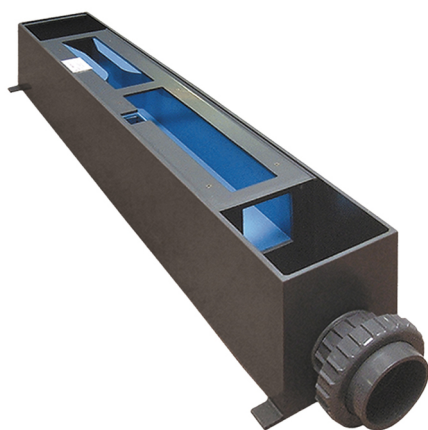
#### Polypropylene housing: Simplified commissioning

On request, we supply assemblies integrated in a polypropylene housing allowing a simple and mobile installation.

#### Conformity with ISO 4359:

DEBITFLO channels for flow rate from 100 m<sup>3</sup>/h and greater, comply with standard ISO 4359.

Please note: Models DF7A, AV07A, DF20A, AV25A do not comply with ISO 4359, due to a throat width < 100 mm.



Channel built in housing

**BAMO** INTERNATIONAL

22, Rue de la Voie des Bans · Z.I. de la gare · 95100 ARGENTEUIL

Tel +33 (0)1 30 25 83 20 Web [www.bamo.eu](http://www.bamo.eu)

Fax +33 (0)1 34 10 16 05 E-mail [export@bamo.fr](mailto:export@bamo.fr)

Flow rate in open channels  
VENTURI CHANNELS DEBITFLO

19-03-2020

D-755.01-EN-AA

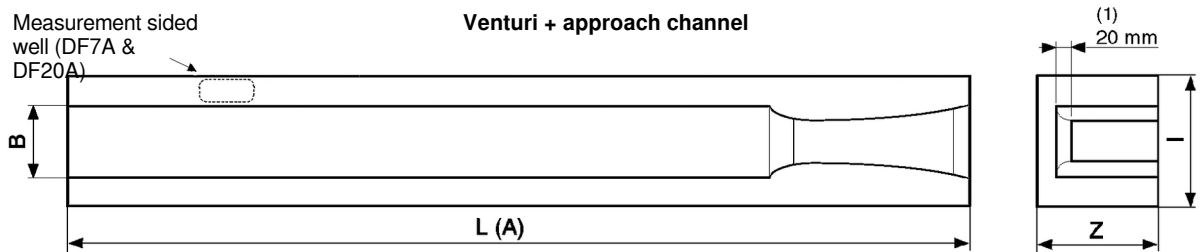
DEB

755-01 /1

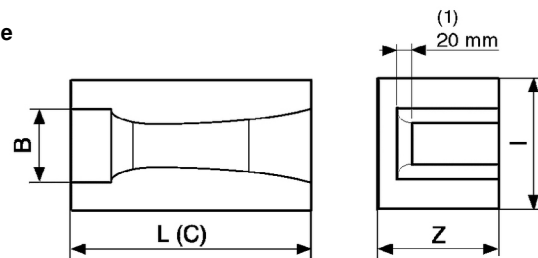
## CODE NUMBERS, REFERENCES AND DIMENSIONS

Code	Reference	Max. flow [ l/s ]	Max. flow [ m <sup>3</sup> /h ]	Max. h [mm]	Overflow [ m <sup>3</sup> /h ]	B [mm]	I [mm]	Z [mm]	L (A) [mm]	L (C) [mm]
755 600	DF7A	1.9	7	96	9.3	100	200	185	1260	-
755 602	AV07A	1.9	7.59	100	12	100	200	185	1260	
755 610	DF20A	5.3	19	122	22.4	100	200	205	1350	
755 612	AV25A	6.9	25	142	28.5	100	200	205	1350	
755 620	DF100A	27.8	100	285	111	150	250	356	2414	
755 630	DF250A	69.4	250	327	271	300	400	395	3583	1143
755 640	DF500A	138.9	500	398	548	450	550	470	4889	1495
755 650	DF1000A	277.8	1000	545	1070	550	650	620	6253	1919
755 660	DF1500A	416.7	1500	622	1621	650	750	705	7229	2161
755 670	DF2500A	694.4	2500	621	2679	1100	1200	700	10 117	2804

Reminder: The DF7A, AV07A, DF20A, AV25A models do not comply with ISO 4359, due to a throat width <100 mm.



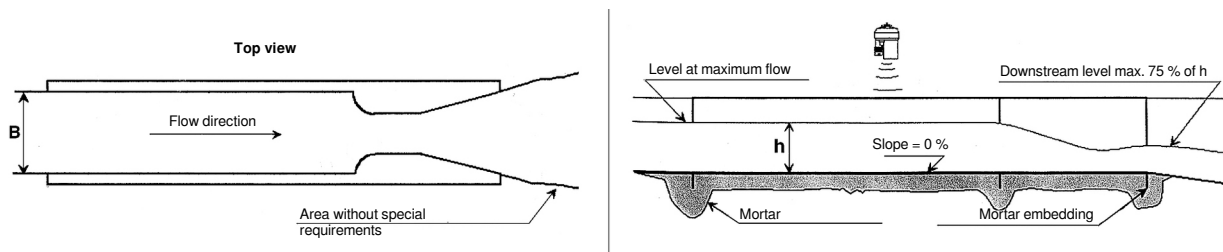
Code	Reference
755 635	DF250C
755 645	DF500C
755 655	DF1000C
755 665	DF1500C
755 675	DF2500C



(1) 20 mm raised bottom for DF7A and DF20A models - Flat bottom for all other models  
Models DF1000A, DF1500A and DF2500A (complete with approach channel) are delivered in three parts (first part "C" is the Venturi itself).

**NOTE:**

When recommendations for installation are respected, accuracy is  $\pm 3\%$  between high and low limits of flow rate. Measurement error between zero flow and Min. flow will be equivalent to  $\pm 3\%$  of low limit value. High and low heights of liquid are indicated only to help choosing the right level transmitter.



# BAMO

INTERNATIONAL  
22, Rue de la Voie des Bans · Z.I. de la gare · 95100 ARGENTEUIL  
Tel +33 (0)1 30 25 83 20 Web [www.bamo.eu](http://www.bamo.eu)  
Fax +33 (0)1 34 10 16 05 E-mail [export@bamo.fr](mailto:export@bamo.fr)

**Flow rate in open channels**  
**VENTURI CHANNELS DEBITFLO**

19-03-2020

D-755.01-EN-AA

**DEB**

**755-01 /2**