

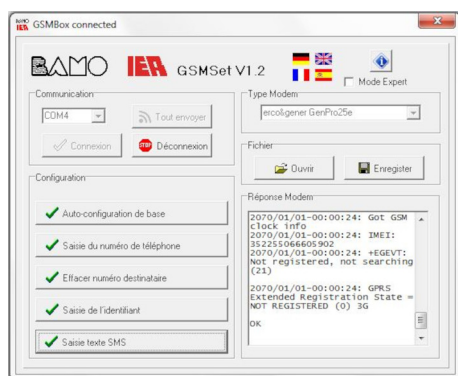
Industrial cellular modem for alarm relay

GsM 425e

- Remote alarm reporting
- 2G/3G/4G box
- 3 inputs / 1 output
- Programming software included



425e GSM modem with antenna



Modem mounted in IP67 case

APPLICATIONS

The GsM 425 allows the status of contacts to be transmitted remotely via SMS.

DESCRIPTION

Entirely dedicated to wireless technology markets, the GsM 425e modem enables quick and easy integration of GSM/GPRS connectivity into a Machine to Machine (M2M) application.

The GsM 425e modem has 3 inputs and 1 output. The programming software has been specially developed to make programming and use as easy as possible.

The GsM 425e kit includes:

- A GsM 425e modem
- A 2G/3G/4G antenna
- A power supply unit
- An RS232 connection cable with an RS232/USB connector for configuring the modem using the BAMO IER software, which can be downloaded from our website
- A 4-wire cable (power supply + 1 IN + 1 OUT)
- A 2-wire cable (2 IN)
- Two mounting plates

Optionally, the GSM 425e modem is available with a pre-wired IP67-rated waterproof wall-mount enclosure for environments requiring modem protection.

CODE NUMBERS AND REFERENCES

Code	Reference	Designation
248 005	425e GSM set	Complete set
Accessories		
222 451G	B/GsM	Pre-wired IP67 wall-mounted box for GSM

BAMO INTERNATIONAL

22, Rue de la Voie des Bans · Z.I. de la gare · 95100 ARGENTEUIL

Tel +33 (0)1 30 25 83 20 Web www.bamo.eu

Fax +33 (0)1 34 10 16 05 E-mail export@bamo.fr

Industrial cellular modem for
alarm relay
GsM 425e

16-06-2025

D-248.04-EN-AD

RE

248-04 /1

TECHNICAL FEATURES

Interface

Antenna	1 SMA female connector
Power supply	7.2 to 32 VDC (4-pin micro-FIT connector)
Serial port	1 RS 232 (female Sub-D connector)
Input/Output	3 opto-coupled digital inputs 3.5 to 35 V DC
	1 logic output "open collector" 500mA 0-48VDC
SIM card (not included)	1 mini SIM 2FF reader
LED	Cellular network connectivity status

Connectivity

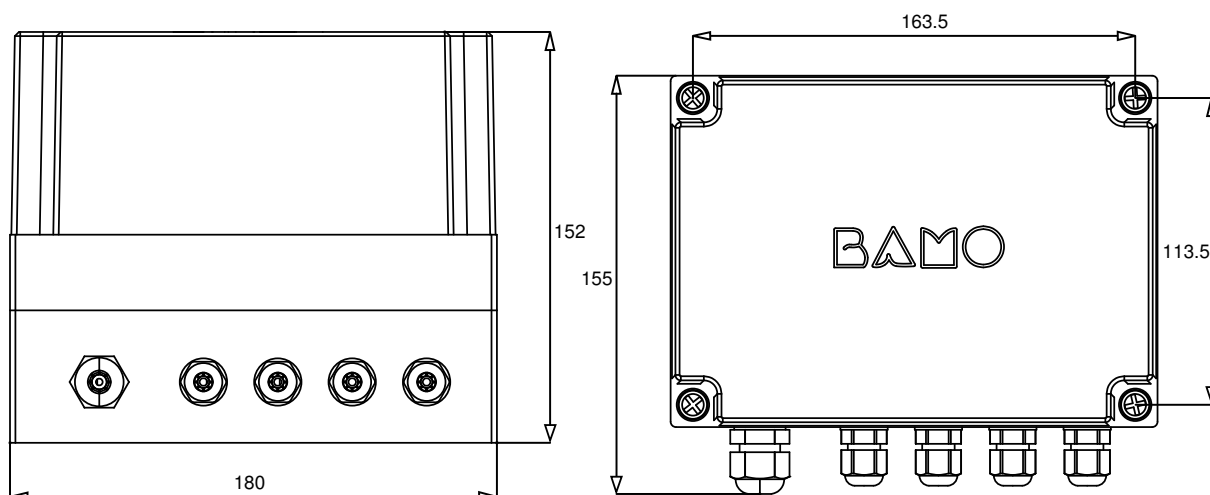
2G	GSM/ GPRS/ EDGE 850/900/1800/1900 MHz
3G	UMTS (HSDPA cat 24, UMTS HSUPA cat 6) 850/900/1900/2100 MHz
4G	LTE (FDD Cat 4) Bands 20 (800 MHz), 5 (850 MHz), 8 (900 MHz), 3 (1800 MHz), 1 (2100 MHz), 7 (2600 MHz)

Technical specifications

Dimensions	GSM only: 73 x 54.5 x 25.5 mm (excluding antenna) Case: 180 x 155 x 152 cm
Weight	90 g
Materials	Aluminum housing
Mounting	2 mounting plates included
Operating temperature	-20°C < T° < +60°C
Storage temperature	-40°C < T° < +85 °C
Power supply	7.2 to 32 Vdc / 15W max.
Power consumption at 12Vdc	In 4G communication: average current (Imoy) = 215 mA

CE compliance: The device complies with the legal requirements of the applicable European Directives.

DIMENSIONS



Waterproof GSM 425e housing (Ref 222 451G)

BAMO INTERNATIONAL

22, Rue de la Voie des Bans · Z.I. de la gare · 95100 ARGENTEUIL

Tel +33 (0)1 30 25 83 20 Web www.bamo.eu

Fax +33 (0)1 34 10 16 05 E-mail export@bamo.fr

Industrial cellular modem for
alarm relay
Gsm 425e

16-06-2025

D-248.04-EN-AD

RE

248-04/2