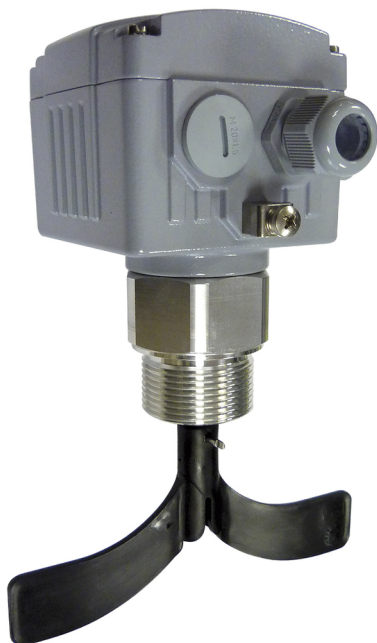


# Rotating paddle level switch DF 11



- For powders and granules
- Threaded fittings
- Extension: Up to 2000 mm
- ATEX options: Dust

## APPLICATIONS

This sensor is suitable for level detection of granules, dust, and other free-flowing solids.

Mounted on silos or tanks, the DF11 operates effectively for level control, filling/emptying operations, and provides protection against overfilling.

These applications are found in the following industries:

- Food: Sunflower seeds, ground coffee, cocoa powder, flour, sugar, etc.
- Chemical: Plastic powder, granules
- Building: Sand, Cement, Plaster
- Energetic: Active carbon, Charcoal powder, Fly ash

## DESCRIPTION

An electric motor drives a paddle that rotates freely when no material is present. When the paddle is slowed down by the presence of material, it causes the motor to rotate slightly, compressing a return spring and triggering two contacts. "One of the electrical contacts is used for control and alarm functions, while the other disconnects the motor power supply.

When the product level drops, the return spring restores the motor to its original position, reactivating the unit.

## TECHNICAL FEATURES

Material:	
Housing	Aluminum RAL 7000
Shaft	stainless steel
Paddle	Plastic (Option: Stainless steel)

Ambient temperature	-20...+70 °C
Operating temperature	-25...+80 °C
Pressure	-0,5...1 bar

Power supply	220 ... 240 V, 110 ... 120 V, 48 V, 24 V AC and 24 V DC
Contact output	Potential-free, 1 mA / 4 V DC ... 2 A / 250 V AC
Rotations	1 /minute
Response time	Approx. 1.20 sec
Consumption	4 VA - 4 W
Electrical protection	Class I
IP rating	IP 66 according to DIN EN 60529

ATEX options	ATEX II 1/2D Ex ta/tb IIIC T80°C ATEX II 1/3D Ex ta/tc IIIB T80°C
--------------	--

**CE compliance:** The device complies with the legal requirements of the applicable European Directives.

**BAMO** INTERNATIONAL

22, Rue de la Voie des Bans · Z.I. de la gare · 95100 ARGENTEUIL

Tel +33 (0)1 30 25 83 20 Web [www.bamo.eu](http://www.bamo.eu)

Fax +33 (0)1 34 10 16 05 E-mail [export@bamo.fr](mailto:export@bamo.fr)

Rotating paddle level switch  
**DF 11**

17-06-2025

D-510.02-EN-AC

**NIV**

**510-02/1**

## CODE NUMBERS AND REFERENCES

### Detector

#### Certifications - Approvals

- B0** Standard
- B1** ATEX Ex II 1/2D T80°C IP66
- B3** ATEX Ex II 1/3D T80°C IP66

#### Supply voltages

- C1** 220...240 V AC / 50-60 Hz
- C2** 110...120 V AC / 50-60 Hz
- C3** 48 V AC / 50-60 Hz
- C4** 24 V AC / 50-60 Hz
- C5** 24 V DC

(Without signal LED)

#### Process connection (aluminum)

- G1A** DIN/ISO228 gas Thread 1"
- G2A** DIN/ISO228 gas thread 1 1/4"
- G3A** DIN/ISO228 gas thread 1 1/2"

#### without extension

- >>>** Plastic
- TK** Blade TK150.....150x27 mm
- TK3** 3 blades TK150.....150x120 mm
- >>>** Stainless steel
- TD** Blade TD140, 140x85 mm
- S1** Socket blade 100x30 (inclined)\*
- X1** Blade X50.....98x50 mm
- X2** Blade X100.....98x100 mm
- X3** Blade X200.....180x100 mm

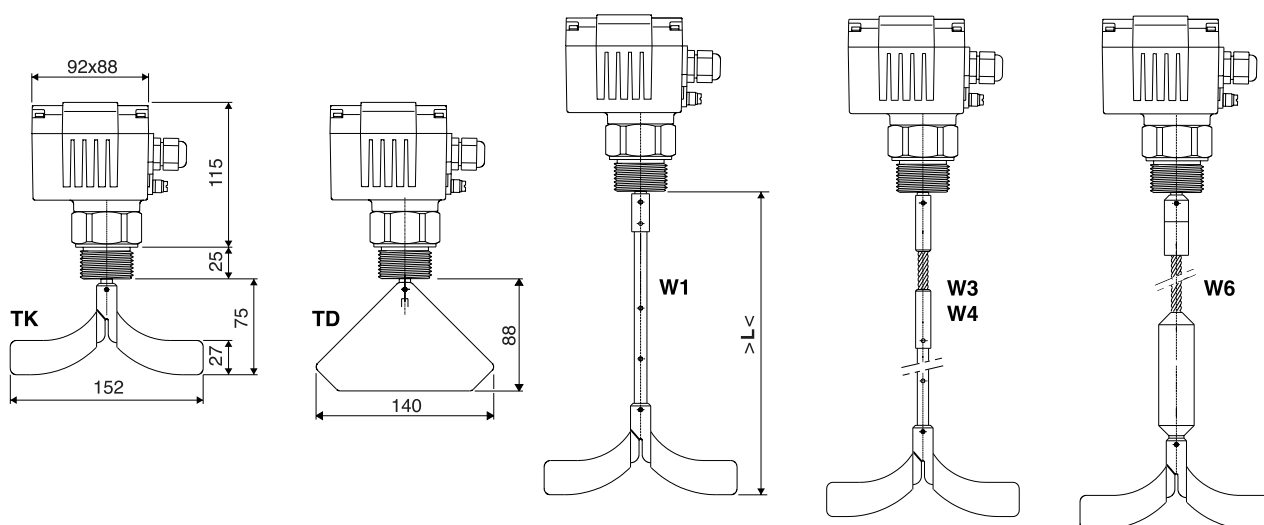
#### Shaft extension

- W0** (Without extension)
- W1** Fixed shaft > L <= 450 mm, adjustable on-site: 350/250 mm
- W3** Pendulum shaft > L <= 500 mm, adjustable on-site: 400/300 mm
- W4** Pendulum shaft > L <= 1000 mm, adjustable on-site: 900/800/700/600 mm
- W6** Cable 2000 mm -- (Can be shortened as required)

DF11A1 B0 C1 H9 G1A TK W1

\*Not available with W6

## DIMENSIONS



# BAMO INTERNATIONAL

22, Rue de la Voie des Bans · Z.I. de la gare · 95100 ARGENTEUIL

Tel +33 (0)1 30 25 83 20 Web [www.bamo.eu](http://www.bamo.eu)

Fax +33 (0)1 34 10 16 05 E-mail [export@bamo.fr](mailto:export@bamo.fr)

Rotating paddle level switch  
**DF 11**

17-06-2025

D-510.02-EN-AC

**NIV**

**510-02/2**