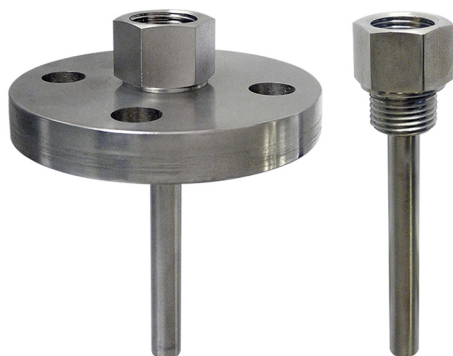


# Thermowells, welded body TWS

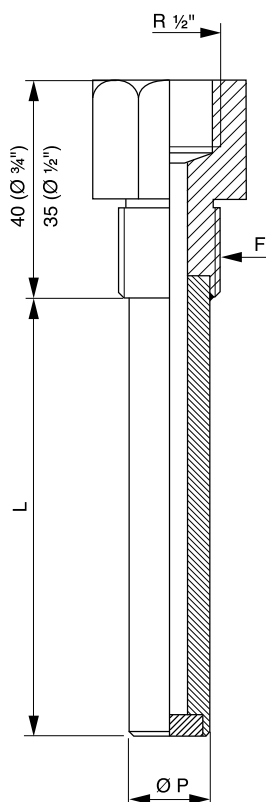


- Body: welded tube
- AISI 316 L, PVC, PPH, PVDF
- Fittings:  
Threads: BSP or NPT 1/2" ; NPT 3/4"  
Flanges: DN 32, 40 or 50

## APPLICATIONS

A thermowell is a tubular thermal conductor designed to isolate the temperature sensor from the liquid in process. Its use is recommended for the protection of a sensor against corrosive effects. It also, allows the replacement or maintenance/ calibration of an instrument without interrupting the process.

## TECHNICAL FEATURES - CODIFICATION



### Model

#### Fitting (F)

- |           |                                 |
|-----------|---------------------------------|
| <b>1</b>  | Thread BSP 1/2" (27 mm wrench)  |
| <b>2</b>  | Thread NPT 1/2" ((27 mm wrench) |
| <b>3</b>  | Thread 3/4" (30 mm wrench)      |
| <b>31</b> | Flange DN 32 - PN 10/16         |
| <b>41</b> | Flange DN 40 - PN 10/16         |
| <b>51</b> | Flange DN 50 - PN 10/16         |
| <b>32</b> | Flange 1 1/4" ANSI 150 Lbs      |
| <b>42</b> | Flange 1 1/2" ANSI 150 Lbs      |
| <b>52</b> | Flange 2" ANSI 150 Lbs          |
| <b>x</b>  | (Others on request)             |

#### Materials

- |          |            |
|----------|------------|
| <b>I</b> | AISI 316 L |
| <b>P</b> | PVC        |
| <b>H</b> | PPH        |
| <b>V</b> | PVDF       |

#### Stem length in mm (L)

**xxx** From 50 up to 500 mm

#### O.D. AISI stem (Ø P)

- |           |                 |
|-----------|-----------------|
| <b>10</b> | 10 x 1 mm       |
| <b>12</b> | 12 x 1 mm       |
| <b>13</b> | 13,71 x 2,24 mm |
| <b>14</b> | 14 x 1 mm       |
| <b>21</b> | 21,3 x 2,8 mm   |

#### O.D. plastic stem (Ø P)

- |           |             |
|-----------|-------------|
| <b>12</b> | 12 x 1,8 mm |
| <b>16</b> | 16 x 2 mm   |

TWS 1 I xxx 10 12

EC Conformity The instrument meets the legal requirements of the current European Directives

**BAMO** INTERNATIONAL

22, Rue de la Voie des Bans · Z.I. de la gare · 95100 ARGENTEUIL

Tel +33 (0)1 30 25 83 20 Web [www.bamo.eu](http://www.bamo.eu)

Fax +33 (0)1 34 10 16 05 E-mail [export@bamo.fr](mailto:export@bamo.fr)

Thermowells, welded body  
**TWS**

TE

635-01 /1

15-11-2019

D-635.01-EN-AA