

Piston flow indicator STAN-P



STAN-P-K



STAN-P-K-VA

- Horizontal or vertical mounting
- Instantaneous flow rate reading
- With adjustable contact
- Stainless steel or brass version
- Operating pressure up to 50 bar
- Measuring range: 0.2...150 l/min

APPLICATION

STAN-P piston flow meters are used to measure and control the flow of water, oils, or other liquids. Their operation is independent of their mounting position.

DESCRIPTION

The device is equipped with an orifice plate containing a magnetized piston, placed in a cylindrical tube. The piston is driven by the fluid to be measured and balanced by a compensated spring, enabling reliable operation in all positions.

A magnet integrated into the piston transmits its movement to a remote mechanical needle indicator, providing instant visualization of the flow rate on the scale.

A bistable reed contact, normally open when there is no flow, is mounted on an external slide and closes when the magnetic piston passes. The contact trigger point can be set across the entire measuring range.

The actual flow rate may exceed the set measuring range without damaging the device, but this will increase the pressure loss.

These devices must only be used with fluids that are free of particles and away from any magnetic influence.

TECHNICAL FEATURES

Medium temperature	-20 ... +90 °C
Measuring unit	l/min
Measuring accuracy	10 % FS (full scale)
Pressure loss	0,02 ... 0,4 bar (G1") 0,02 ... 0,3 bar (G½")

Brass version: STAN-P-K

Max. operating pressure	50 bar
Display	Stainless steel 1.4301 (304) and flat glass
Body, connections, piston	Brass
Spring	Inox 1.4571 (316Ti)
Magnet	Ferrite

Stainless steel version 1.4571: STAN-P-K-VA

Max. operating pressure	50 bar
Indicator	Stainless steel 1.4301 (304) and flat glass
Body, connections, piston	Inox 1.4571 (316Ti)
Spring	Inox 1.4571 (316Ti)
Magnet	Ferrite

Other designs available on request

BAMO INTERNATIONAL

22, Rue de la Voie des Bans · Z.I. de la gare · 95100 ARGENTEUIL

Tel +33 (0)1 30 25 83 20 Web www.bamo.eu

Fax +33 (0)1 34 10 16 05 E-mail export@bamo.fr

Piston flow indicator
STAN-P

09-01-2026

D-726.03-EN-AB

FLO

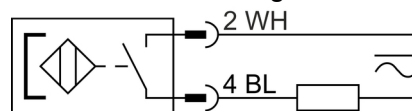
726-03/1

Technical characteristics of contacts

The flow rate to be monitored is set using the adjustable limit switch on an externally applied scale. To do this, loosen the fixing screw, adjust the switching position by moving it, and then tighten the fixing screw again.

Type	Reed switch
Switching function	Normally open (NO)
Switching capacity	max. 10 W
Switching current	max. 1 A
Switching voltage	100 V DC
Dielectric strength	200 V DC
Contact resistance	150 mΩ
Temperature range	-20 ... +90 °C
Protection class	IP 65
Connnection	Plug-in connector M12x1, 4-pin
Material	PBT (polybutylene terephthalate), black

Connection diagram

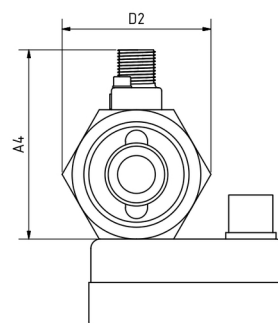
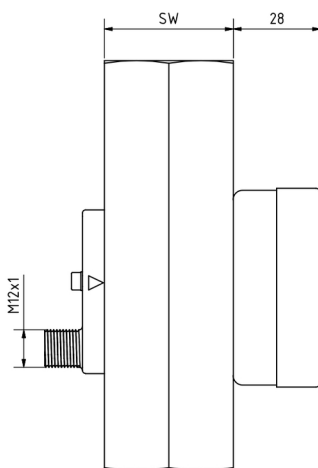
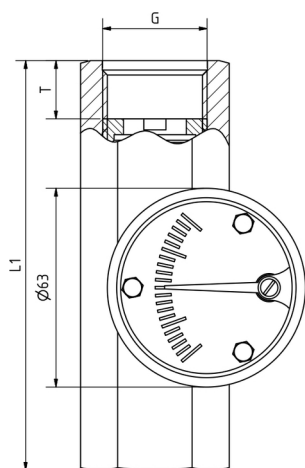


CODE NUMBERS & REFERENCES

Brass		Stainless Steel		Measuring range	Fitting
Code	Reference	Code	Reference	H2O [l/min]	(ISO 228-1)
726 520	STAN-P-K-2-1	726 620	STAN-P-K-VA-2-1	0,2 ... 1	G½"
726 522	STAN-P-K-2-1,6	726 622	STAN-P-K-VA-2-1,6	0,4 ... 1,6	G½"
726 524	STAN-P-K-2-5	726 624	STAN-P-K-VA-2-5	1,5 ... 5	G½"
726 526	STAN-P-K-2-10	726 626	STAN-P-K-VA-2-10	3 ... 10	G½"
726 528	STAN-P-K-2-20	726 628	STAN-P-K-VA-2-20	8 ... 20	G½"
726 530	STAN-P-K-1-45	726 630	STAN-P-K-VA-1-45	15 ... 45	G1"
726 532	STAN-P-K-1-90	726 632	STAN-P-K-VA-1-90	30 ... 90	G1"
726 534	STAN-P-K-1-150	726 634	STAN-P-K-VA-1-150	60 ... 150	G1"

DIMENSIONS

Fitting	Dimensions					Weight [g]	
(ISO 228-1)	SW	L1	D2	T	A4	Brass	Stainless Steel
G ½"	31	90	27	15	46	418	400
G 1"	47	130	41	18,5	60	1046	990



BAMO INTERNATIONAL

22, Rue de la Voie des Bans · Z.I. de la gare · 95100 ARGENTEUIL

Tel +33 (0)1 30 25 83 20 Web www.bamo.eu

Fax +33 (0)1 34 10 16 05 E-mail export@bamo.fr

Piston flow indicator
STAN-P

09-01-2026

D-726.03-EN-AB

FLO

726-03/2